



University of British
Columbia & ICT.

A lasting, scalable partnership.

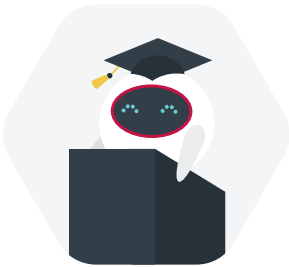
Project overview.

The University of British Columbia (UBC) is a global centre for teaching, learning and research, consistently ranked among the top 20 public universities in the world and recently recognized as North America's most international university. With a daytime population of 75,000 the campus thrives with student life, but its security system needed to be updated to handle the rigors of a modern educational environment.



Location.

Vancouver, Canada.



Industry.

Sitting within the **education vertical**, the University of British Columbia is a research university that ranks in the top three in Canada.



Buildings.

There are 115 buildings across the campus.



Doors.

2,300+ access controlled doors.



Card Holders.

50,000+ cards issued.



Koerner Library and Ponderosa complex.

A closer look.

Before:

- > Problems with reliability and vulnerabilities
- > Unable to scale
- > Legacy products lacked features

After:

- > Unified security solution
- > IP Reporting
- > Integrations to elevators and student management system
- > Compact DIN rail installation reduced wall space by 70%



AMS Student Nest.

The story.

UBC's challenge was to find a unified enterprise solution that wouldn't compromise its 24/7 security operation and allowed it to scale as the campus continues to grow. The university needed a seamless integration of services that provided safety and was unobtrusive to students, but could work at scale to meet growing demand.

Providing a unified view.

Keeping students and staff safe is a top priority in any educational environment. This job was made harder by the separate platforms UBC was using for access control and alarms. Shortcomings of their legacy system, were also top of mind as John Molnar, Access Services Manager at UBC, and his team set out to find a solution that would minimize risks and provide a clear picture of what is happening on campus.

"We needed to migrate towards a technology that wasn't simply the latest revision of an antiquated platform," says Molnar. This made the provider decision "critically important."

After investigating multiple options, Molnar and his team chose ICT. Using Protege GX as the heart of a large-scale enterprise solution enabled integration of alarms, student management and other campus systems, and Armor IP alarm reporting. This would provide Molnar and his team with a real-time, 360-degree view of the campus, and enable them to respond quickly to any issues that might arise.

Nuturing with support & training.

UBC was in the unique position of being self-installers with their 9 strong team on campus. This meant that all staff had to be brought up to speed with the equipment and provided with training to facilitate the early stages of installation.

"ICT provided support through the steepest part of our learning curve," says Molnar. "The technical certification process really helped our staff gain a thorough understanding of ICT's hardware and software products."

Confidence to scale.

The first instances of ICT product on campus were large scale installations of Protege GX during construction of the high-profile Pharmaceutical Sciences and Earth Sciences institutional research buildings in 2012. "It was imperative that the electronic access and security systems be operational for occupancy," Molnar says. "With ICT's support, this was achieved."

The outcome.

This confidence has seen the partnership between UBC and ICT progress from these two original sites to an ongoing multi-year relationship that now encompasses 115 buildings, over 2,300 doors, and more than 50,000 card holders across the campus. As well as using lockdown, smart reader, and camera call up functionality, they have also recently integrated access control of more than 50 elevators with Protege GX, giving an even more unified system. In addition, UBC has been able to save 70% of highly valuable wall space thanks to the compact design of ICT's DIN Rail hardware.

Securing the future.

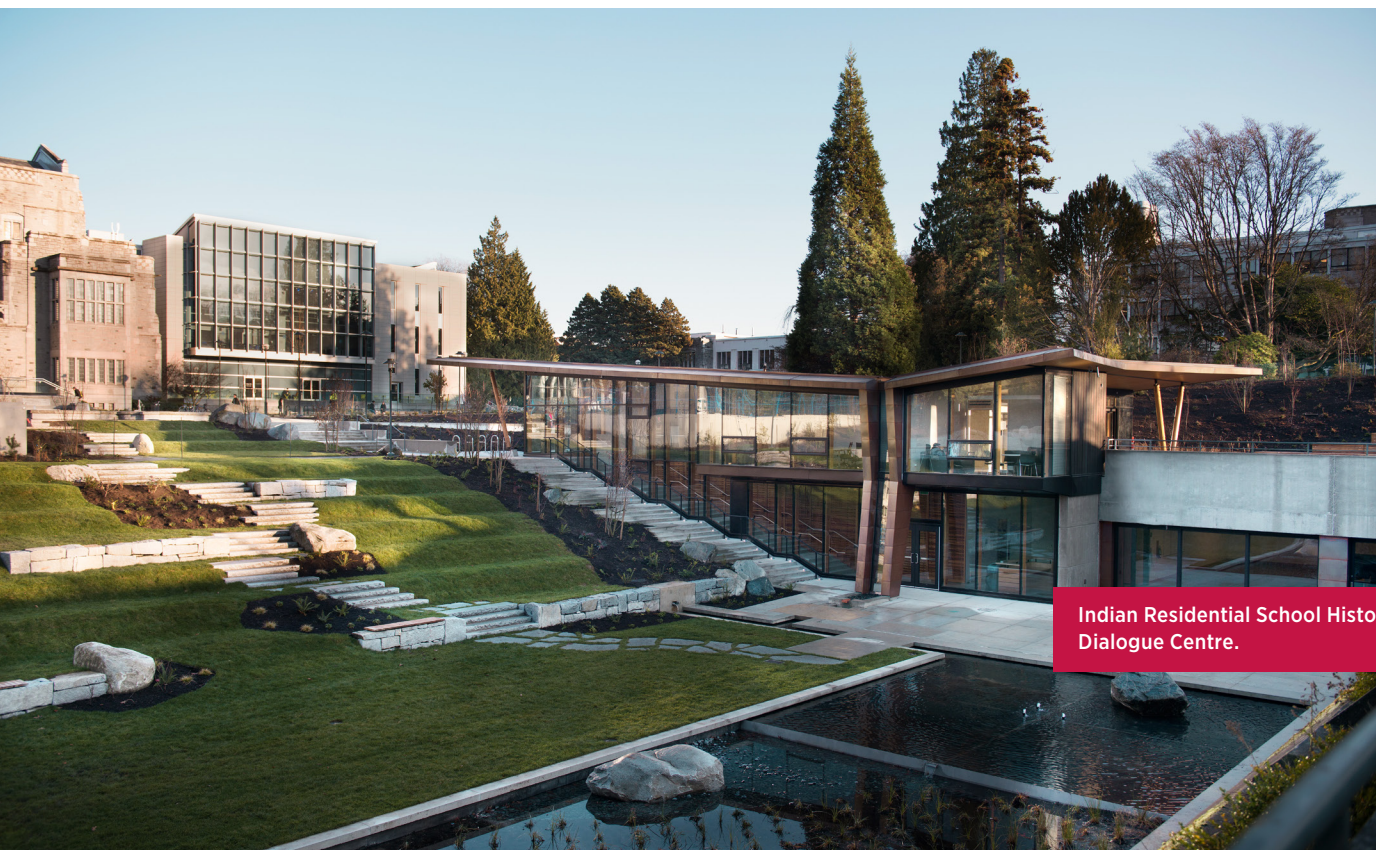
Even with the partnership now over a decade old, Protege GX continues to deliver a future-proofed solution. It allows for easy expansion alongside the growth of UBC, ensuring the safety of students and staff for years to come.



The advantages of unifying access control and intruder detection into a single platform are obvious. It has simplified design, increased user friendliness, decreased service issues, and improved situational awareness for Campus Security.”



- **John Molnar, Access Services Manager at UBC .**



Indian Residential School History and Dialogue Centre.

Image credits.

Image credits: Don Erhardt, Martin Dee & Paul H. Joseph
- UBC Brand & Marketing

About ICT.

Founded in 2003 by Hayden and Rachael Burr, ICT began with a focused vision to provide innovative and easy-to-use electronic access control and security solutions. Almost 20 years later, tens of thousands of companies worldwide use ICT products and systems every day, and our vision remains steadfast and engrained in all we do.

With headquarters in Auckland, New Zealand, we have a global presence and an international reach. Offices in Denver (USA), Toronto (Canada), Melbourne (Australia), Copenhagen (Denmark) and Hong Kong, provide full local sales, support and service to our clients and partners around the world.

Innovation is in our DNA.

With more than 40% of our staff dedicated to research and development, innovation is a core part of the ICT DNA. When you invest in an ICT solution, you can rest assured that your investment is protected by the best in the industry.

One solution, maximum value.

Our use of open technology allows our products to integrate seamlessly with your existing systems, providing a comprehensive solution that adds value to the infrastructure investments you already have on site.

From design to dispatch.

Every ICT product is designed and manufactured in New Zealand from our state-of-the-art purpose-built premises, with 100% of products going through rigorous testing standards to ensure superior quality.

This is all backed up by sales, support, and training, and we offer a 5-year warranty for our ICT Dealer Network members, providing the perfect solution for your next project, regardless of scope.



Designers and manufacturers of integrated electronic access control, security and automation products. Designed & manufactured by Integrated Control Technology Ltd.
Copyright © Integrated Control Technology Limited 2003-2022. All rights reserved.

Disclaimer: Whilst every effort has been made to ensure accuracy in the representation of these products, neither Integrated Control Technology Ltd nor its employees, shall be liable under any circumstances to any party in respect of decisions or actions they may make as a result of using this information. In accordance with the Integrated Control Technology policy of enhanced development, design and specifications are subject to change without notice.

www.ict.co